

TIPO N

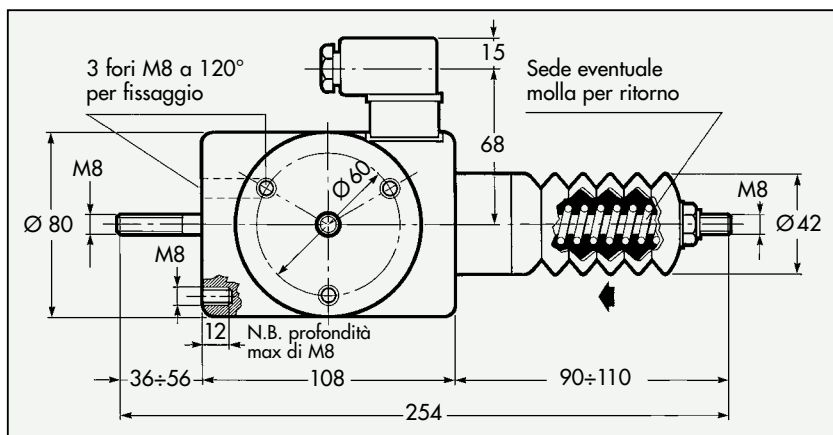
ELETTROMAGNETI MONOBOBINA PER TRAZIONE O SPINTA

IN CORRENTE CONTINUA A 12 Vcc - A 24 Vcc - CON VOLTAGGIO A RICHIESTA



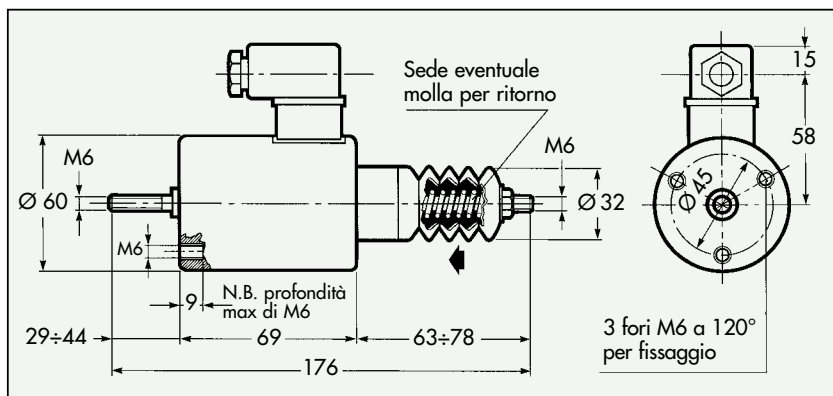
MODELLI N300

N311PW36(12Vcc) - N321PW36(24Vcc)



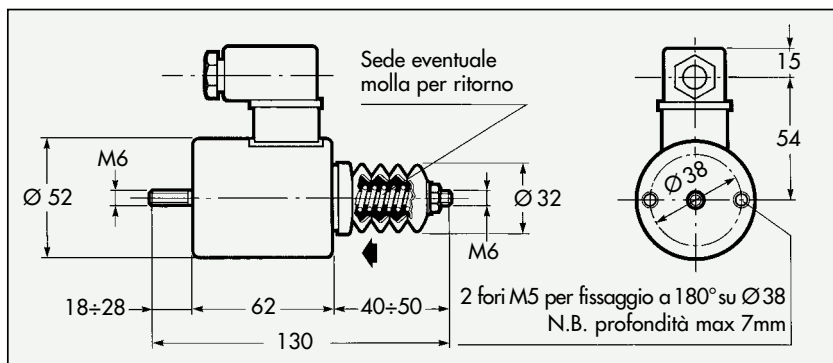
MODELLI N200

N211PW25(12Vcc) - N221PW25(24Vcc)



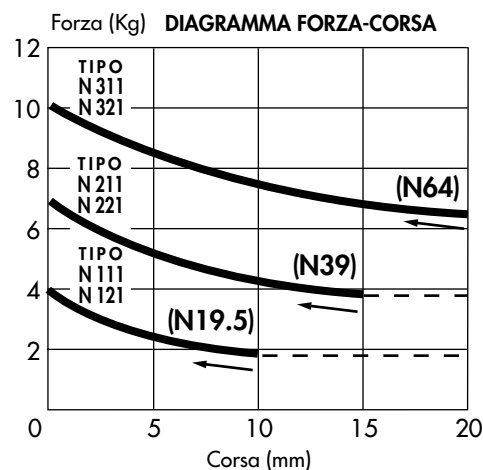
MODELLI N100

N111PW20(12Vcc) - N121PW20(24Vcc)



SPECIFICHE

TIPO	N300	N200	N100
Potenza a servizio continuativo	36 W	25 W	20 W
Corsa nucleo mobile	20 mm	15 mm	10 mm
Forza inizio corsa (senza molla)	6.5 Kg	4 Kg	2 Kg
Forza fine corsa (senza molla)	10 Kg	7 Kg	4 Kg
Peso	3.6 Kg	1.3 Kg	0.8 Kg
Classe di isolamento avvolgimenti	F (150° C)	F (150° C)	F (150° C)
Temperatura ambiente	-25° C ÷ 120° C	-25° C ÷ 120° C	-25° C ÷ 120° C
Molle interne opzionali	M1(0.0÷1.1 Kg)	M1(0.2÷1.0 Kg) M2(0.6÷2.0 Kg) M3(1.0÷3.0 Kg)	M1(0.3÷0.6 Kg)



1 Kg = 9.81 Newtons



COSTRUZIONI ELETTROMAGNETICHE INDUSTRIALI

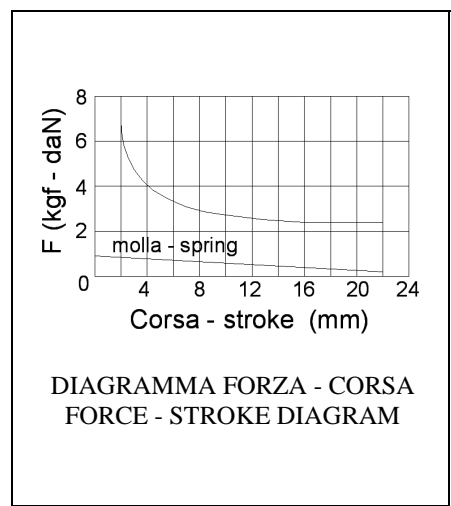
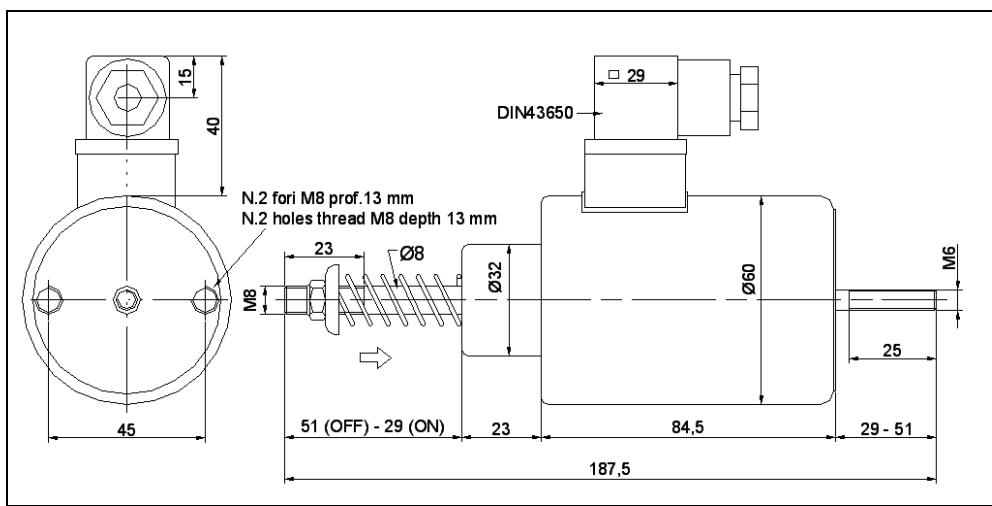
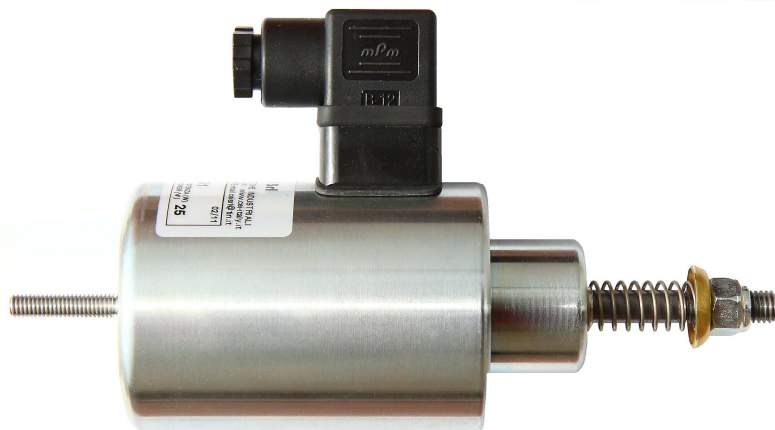
CORSO PRIMO LEVI, 7 - 10090 CASCINE VICA - RIVOLI - TORINO (ITALY) - TEL. 0039 0119594446 - FAX. 0039 0119591357

e-mail: ceisrl@tin.it www.cei-italy.it

TIPO N Elettromagneti Monobobina per Trazione e Spinta

TYPE N Single Coil Electromagnets for Push-Pull Action

ALIMENTAZIONE 12 VCC – 24 VCC O CON VOLTAGGIO A RICHIESTA
 STANDARD 12 VDC – 24 VDC OR VOLTAGE ON REQUEST



CARATTERISTICHE TECNICHE TECHNICAL SPECIFICATIONS

Tipo Type	Tensione – Voltage (V)	Consumo - Power (W)	Corsa – Stroke (mm)	Forza * – Force * (Kg)	Servizio - Duty (ED%)	Protezione – Protection	Peso – Weight (Kg)
N60V12M1	12	25	22	2.4	100	IP40	1,7
N60V24M1	24	25	22	2.4	100	IP40	1,7

(*) Forza senza molla – Force without spring (T=20°C)
 Peso nucleo mobile – Weight plunger: 120 g

1 Kg = 9.81 N



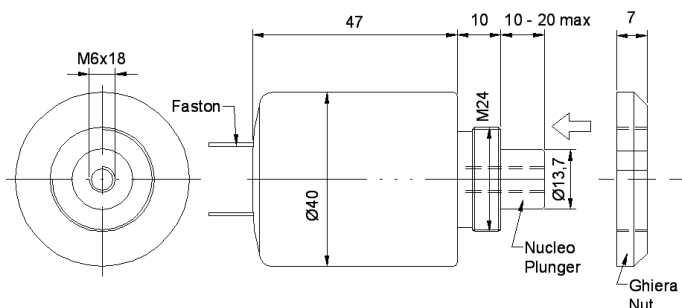
COSTRUZIONI ELETTROMAGNETICHE INDUSTRIALI

C.SO P. LEVI, 7- RIVOLI – TORINO (ITALY) – TEL.0039 011 9594446 - FAX 0039 011 9591357 www.cei-italy.it e-mail: ceisrl@tin.it

TIPO N ELETTRICITÀ MONOBOBINA PER TRAZIONE E SPINTA

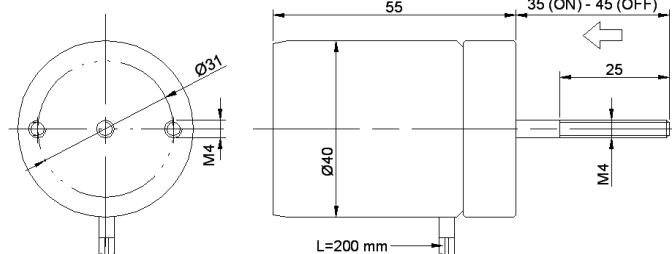
TYPE N SINGLE COIL ELECTROMAGNETS FOR PUSH-PULL ACTION

ALIMENTAZIONE 12 VCC – 24 VCC O CON VOLTAGGIO A RICHIESTA
 STANDARD 12 VDC – 24 VDC OR VOLTAGE ON REQUEST



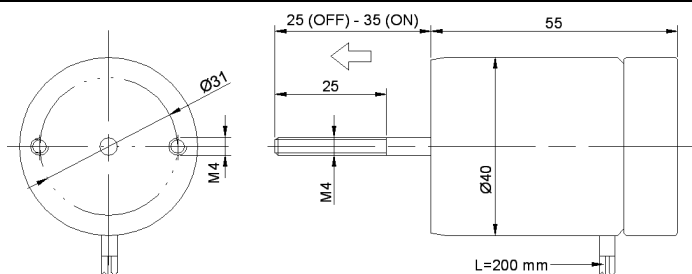
N011W14 (12V) – N021W14.5 (24V)

DI TRAZIONE SENZA MOLLA PULL ACTION WITHOUT SPRING



N011W14F (12V) – N021W14.5F (24V)

DI TRAZIONE SENZA MOLLA PULL ACTION WITHOUT SPRING



NS011W14M1F (12V) – NS021W14.5M1F (24V)

DI SPINTA CON MOLLA PUSH ACTION WITH SPRING

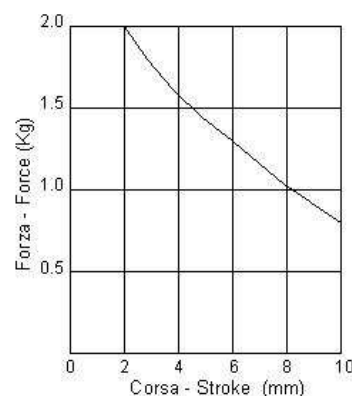


DIAGRAMMA FORZA-CORSA
 FORCE-STROKE DIAGRAM

1 Kg = 9.81 N

CARATTERISTICHE TECNICHE TECHNICAL SPECIFICATIONS

Modello Model	Tensione Voltage (V)	Consumo Power (W)	Corsa Stroke (mm)	Forza Force (Kg)	Servizio Duty (ED%)	Protezione Protection	Peso Weight (Kg)
N011W14 N021W14.5	12 24	14 14.5	10	0.8	100	IP40	0.39
N011W14F N021W14.5F	12 24	14 14.5	10	0.8	100	IP40	0.39
NS011W14M1F NS021W14.5M1F	12 24	14 14.5	10	0.7	100	IP40	0.38



C.E.I. srl

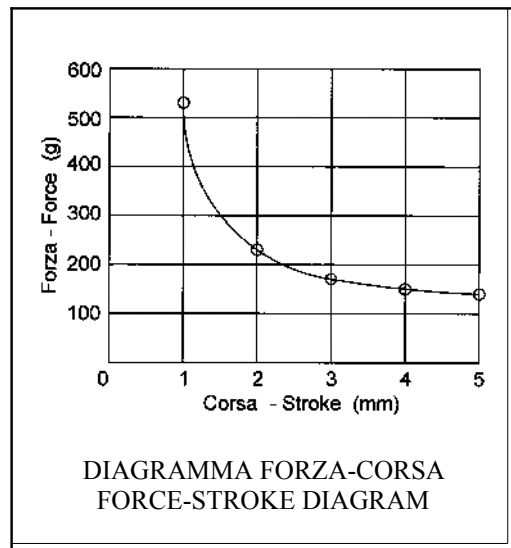
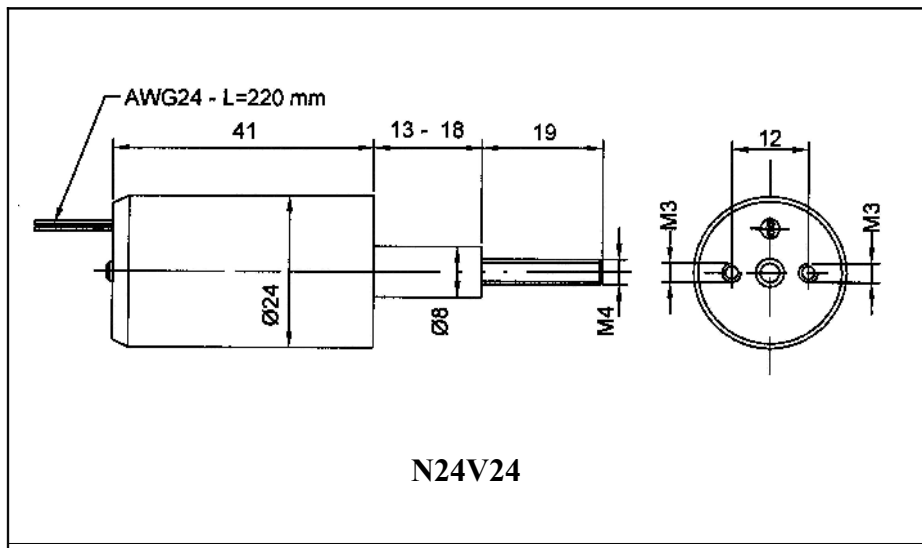
COSTRUZIONI ELETTRICITÀ INDUSTRIALI

C.SO P. LEVI, 7- CASCINE VICA - RIVOLI - TORINO (ITALY) - TEL.0039 011 9594446 - FAX 0039 011 9591357 e-mail: ceisrl@tin.it

TIPO N
TYPE N

ELETTROMAGNETI MONOBOBINA PER TRAZIONE
SINGLE COIL ELECTROMAGNETS FOR PULL ACTION

ALIMENTAZIONE 24 VCC O CON VOLTAGGIO A RICHIESTA
STANDARD 24 VDC OR VOLTAGE ON REQUEST



CARATTERISTICHE TECNICHE TECHNICAL SPECIFICATIONS

Tipo Type	Tensione - Voltage (V)	Consumo - Power (W)	Corsa - Stroke (mm)	Forza - Force (g)	Servizio - Duty (ED%)	Protezione - Protection	Peso - Weight (Kg)
N24V24	24	5.3	5	140	100	IP40	0.110



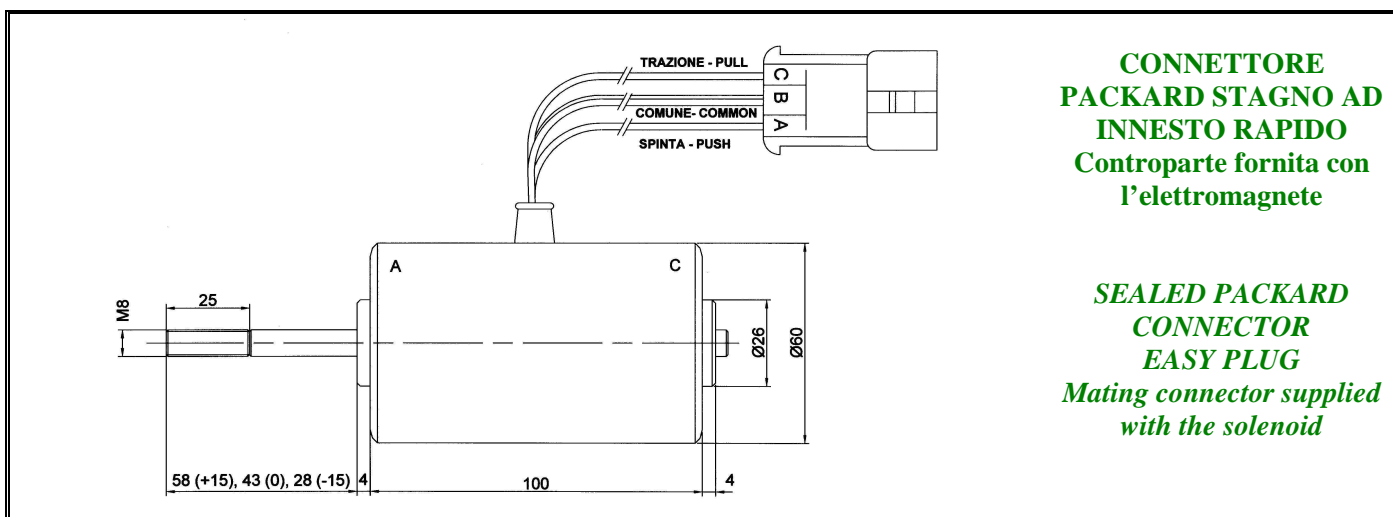
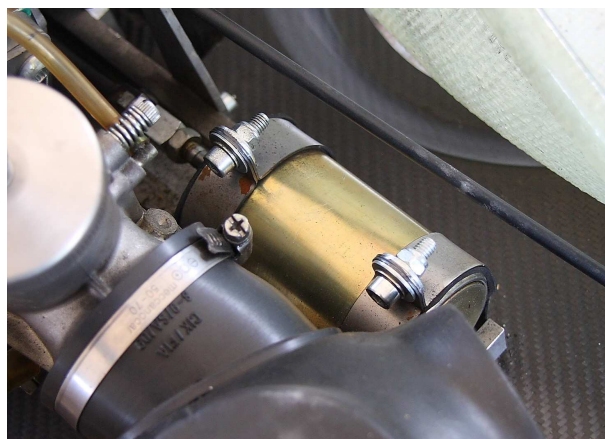
COSTRUZIONI ELETTROMAGNETICHE INDUSTRIALI

C.SO P. LEVI, 7- CASCINE VICA - RIVOLI - TORINO (ITALY) - TEL.0039011 9594446 - FAX 0039 011 9591357 e-mail: ceisrl@tin.it

TIPO B ATTUATORE PER SELEZIONE MARCE PER KART E QUAD TYPE B GEARSHIFT FOR KART AND QUAD

IDEALE PER AUMENTARE E SCALARE LE MARCE PARTENDO DALLA POSIZIONE DI FOLLE DEL CAMBIO - ALIMENTAZIONE STANDARD 12 VCC E 24 VCC

PERFECT FOR SHIFTING GEARS UP AND DOWN FROM NEUTRAL - STANDARD VOLTAGE 12 VDC AND 24 VDC



**CONNETTORE
PACKARD STAGNO AD
INNESTO RAPIDO**
Controparte fornita con
l'elettromagnete

**SEALED PACKARD
CONNECTOR
EASY PLUG**
Mating connector supplied
with the solenoid

CARATTERISTICHE TECNICHE TECHNICAL SPECIFICATIONS

Tipo Type	Tensione Voltage	Consumo Power	Corsa Stroke	Forza Force	Servizio Duty (ED)	Tempo di azionamento Operate time	Peso Weight
B221W480/H	24 VCC	480W	15+15 mm	120 N	5 %	130 msec	1.6 Kg
B211W400/H	12 VCC	400W	15+15 mm	120 N	5 %	140 msec	1.6 Kg

Fissaggio standard con fasce – *Standard fixing by bands*

Bobine bloccata contro le vibrazioni – *Jammed coils against the vibrations*

Scorrimento dello stelo su boccole autolubrificanti - *Sliding stem on self-lubricating bearings*

Stelo in acciaio inox – *Stainless steel stem*

Grado di protezione – *Protection class : IP45*



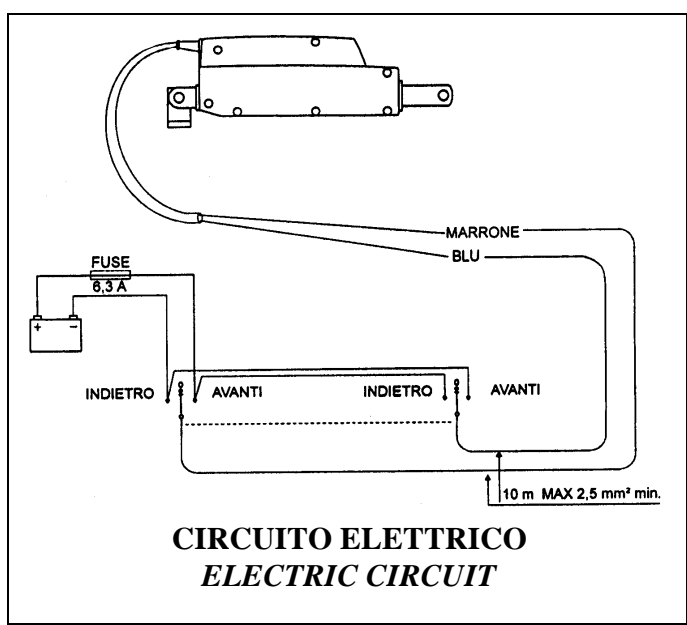
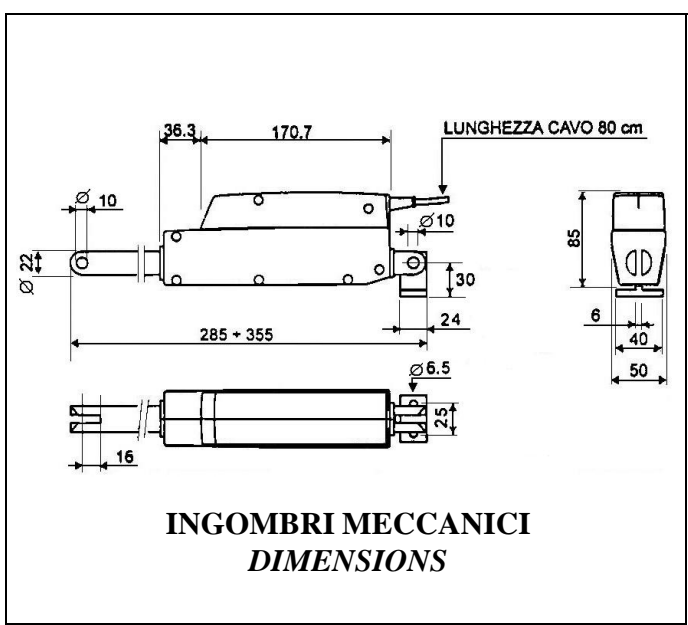
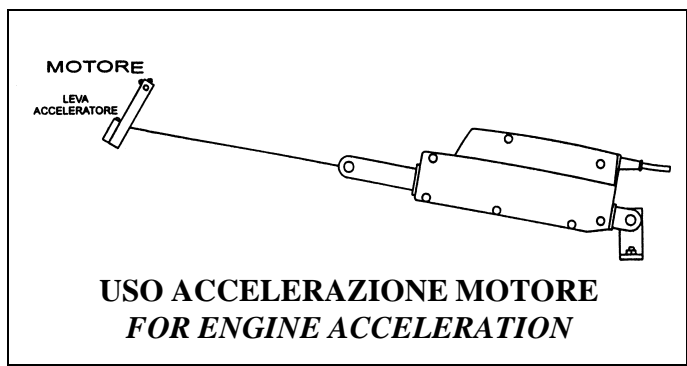
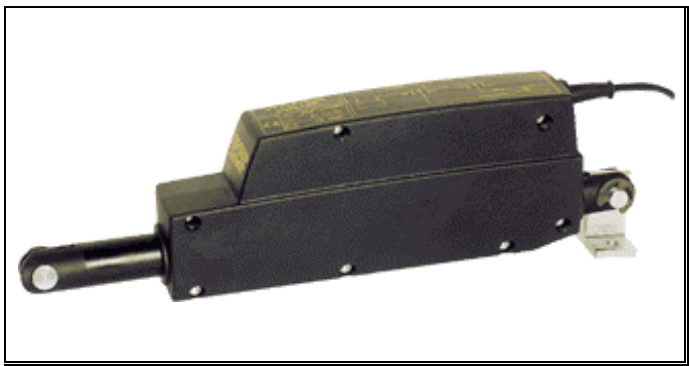
COSTRUZIONI ELETTROMAGNETICHE INDUSTRIALI

C.E.I. srl

C.SO P. LEVI, 7- RIVOLI - TORINO (ITALY) - TEL.0039 011 9594446 - FAX 0039 011 9591357 www.cei-italy.it - e-mail: ceisrl@tin.it

ATTUATORE LINEARE VAR-150/00

LINEAR ACTUATOR VAR-150/00



CARATTERISTICHE TECNICHE *TECHNICAL SPECIFICATIONS*

Tensione nominale – <i>Nominal voltage</i>	12 VDC	24 VDC
Corrente nominale – <i>Nominal current</i>	3 A	1.5 A
Forza – <i>Force</i>	30 Kg - 300N	
Corsa massima – <i>Max stroke</i>	70 mm	
Velocità alla tensione nominale – <i>Speed at the nominal tension</i>	15 mm /sec (70 mm in 5 sec)	
Servizio – <i>Duty</i>	ED20% - 8 min max	
Temperatura di esercizio – <i>Temperature range</i>	-10 ; +50 °C	
Grado di protezione – <i>Protection</i>	IP 51	
Peso – <i>Weight</i>	850 g	



COSTRUZIONI ELETTROMAGNETICHE INDUSTRIALI

C. E. I. srl C.SO P. LEVI, 7- CASCINE VICA - RIVOLI - TORINO (ITALY) - TEL.0039 011 9594446 - FAX 0039 011 9591357 e-mail: ceisrl@tin.it