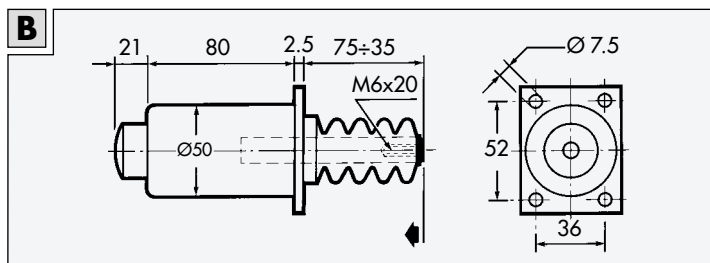
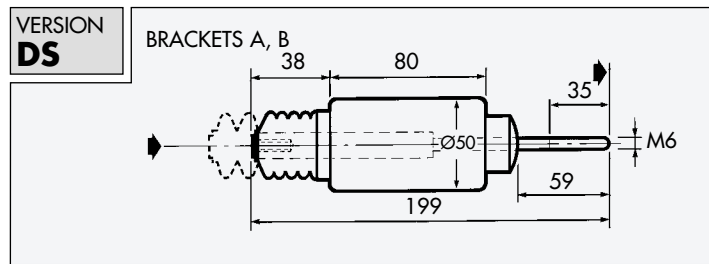
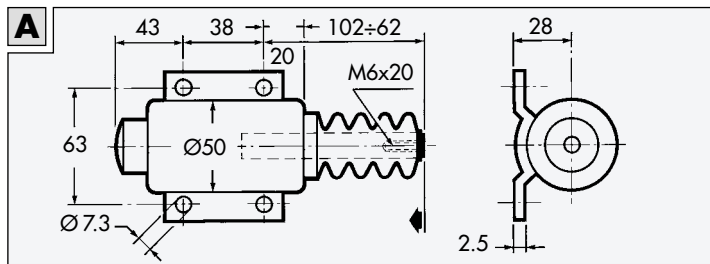
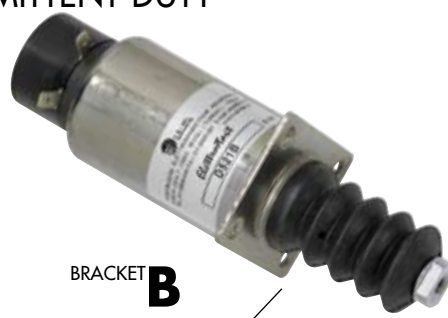
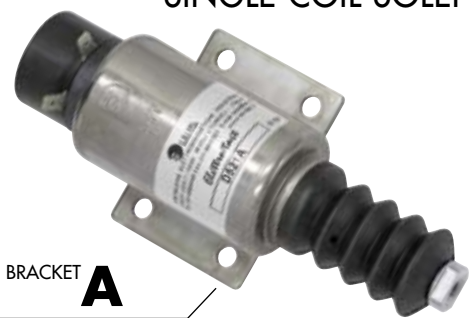
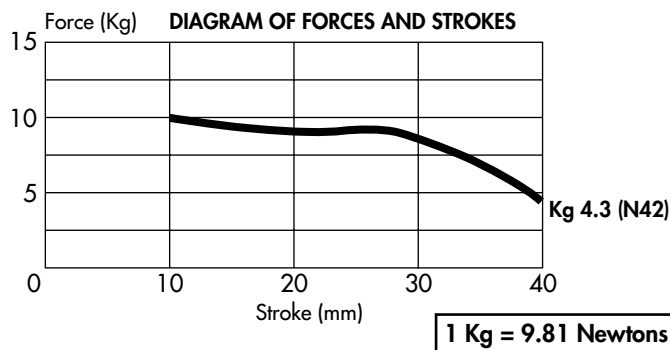


SINGLE COIL SOLENOID FOR INTERMITTENT DUTY



SPECIFICATIONS

| | | |
|---------------------------|-----------------|---------|
| Rated voltage | 12 V DC | 24 V DC |
| Pull current | 27 A | 14.5 A |
| Duty service | Intermittent | |
| Stroke | 40 mm | |
| Force at starting | 4.3 Kg | |
| Windings insulation class | H (180° C) | |
| Ambient temperature | -40° C ÷ 120° C | |
| Weight | 1.17 Kg | |



OPERATION

The single coil Elettrostart solenoids are for intermittent duty providing high FORCE-STROKE pick-up. These solenoids are used to stop diesel engines when energized by actuating the fuel supply lever. The solenoid is de-energized when the engine is running, only in the stop phase it is energized cutting off the fuel flow. Due to its high operating power the energized time must not exceed one minute, while the de-energized time between two energizing phases must be long enough for the solenoid to cool down.

AVAILABLE OPTIONS

The desired model has to be defined choosing one option in every column, building in this way the solenoid code.

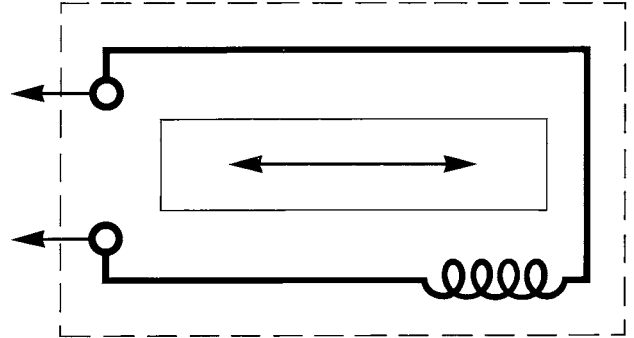
| Versions | Voltages | Circuits | Brackets | Optional Springs | Electrical connections |
|-----------------------------|--------------------|---------------------|----------|------------------|------------------------|
| D5 pull action | 1 = 12 V DC | 1 = Series D | A | M1 | Standard Faston |
| DS5 pull-push action | 2 = 24 V DC | | B | M2 | F = Cables |

SINGLE COIL SOLENOID FOR INTERMITTENT DUTY

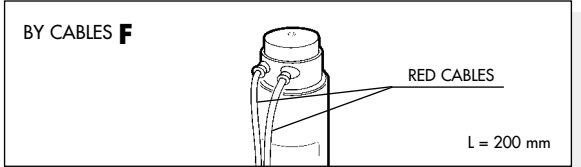
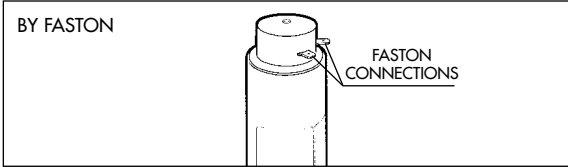
ELECTRIC CIRCUITS FOR DIESEL ENGINES

| | |
|-----------------|---------------------|
| SERIES D | INTERMITTENT |
|-----------------|---------------------|

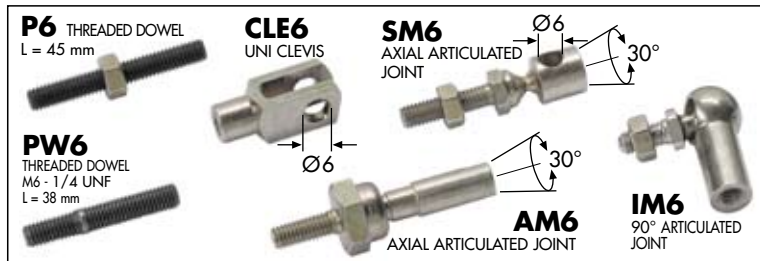
ELECTRIC CIRCUIT FOR INTERMITTENT DUTY
The solenoid connection is not conditioned by the polarity (+ and -).



ELECTRICAL CONNECTIONS



ACCESSORIES WITH M6 THREAD



OPTIONAL SPRINGS

| INTERNAL SPRING 5M1 | | INTERNAL SPRING 5M2 | |
|----------------------------|--------|----------------------------|--------|
| WIRE DIAMETER SPRING 1 | | WIRE DIAMETER SPRING 1.25 | |
| | | | |
| Kg 0.3 | Kg 1.5 | Kg 0.4 | Kg 2.5 |

EXAMPLE OF APPLICATION

FOR STOP ENGINE WITH INJECTION PUMP NORMALLY OPEN
ENGINE SHUTDOWN BY SOLENOID ENERGIZING
INTERMITTENT DUTY

