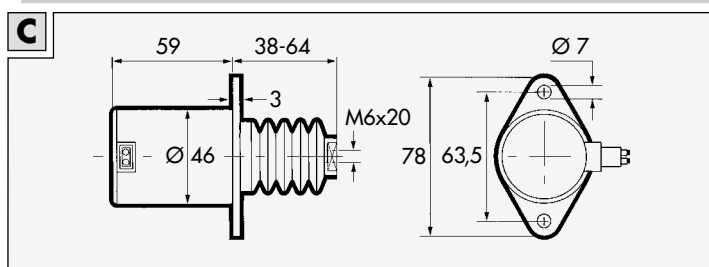
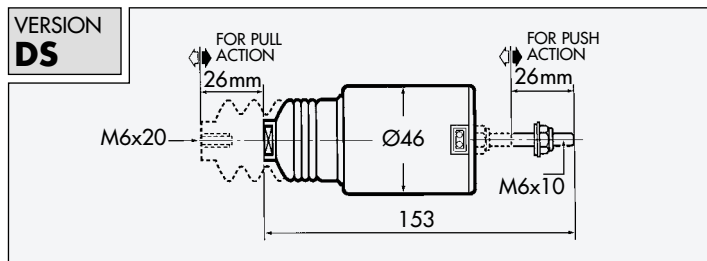
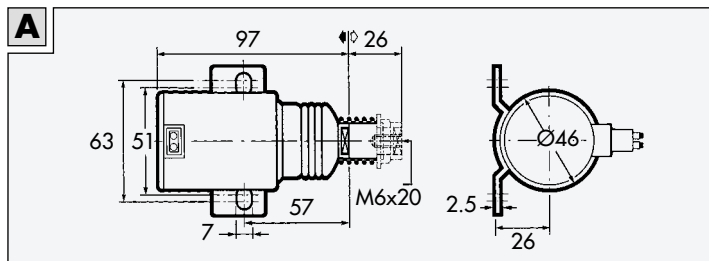
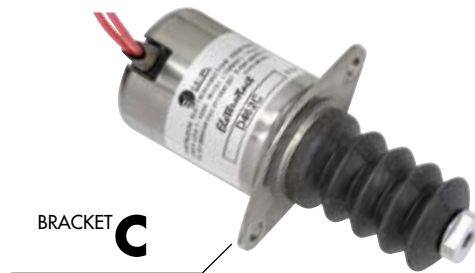
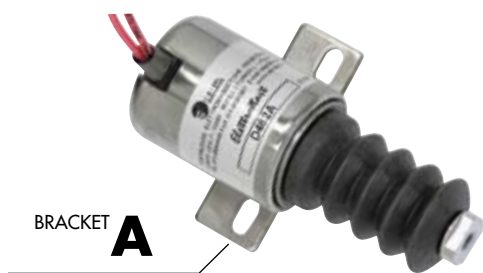
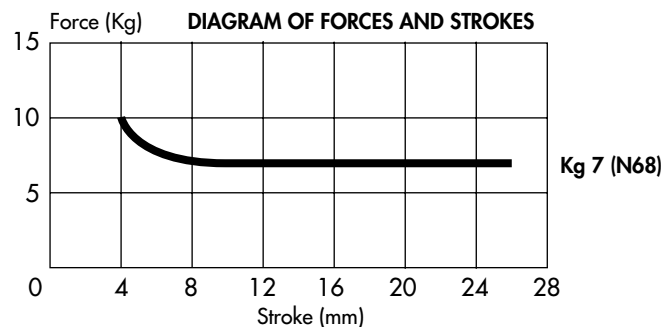


SINGLE COIL SOLENOID FOR INTERMITTENT DUTY



SPECIFICATIONS

Rated voltage	12 V DC	24 V DC
Pull current	27 A	13 A
Duty service	Intermittent	
Stroke	26 mm	
Force at starting	7 Kg	
Windings insulation class	H (180° C)	
Ambient temperature	-40° C ÷ 120° C	
Weight	0.74 Kg	



1 Kg = 9.81 Newtons

OPERATION

The single coil Elettrostart solenoids are for intermittent duty providing high FORCE-STROKE pick-up. These solenoids are used to stop diesel engines when energized by actuating the fuel supply lever. The solenoid is de-energized when the engine is running, only in the stop phase it is energized cutting off the fuel flow. Due to its high operating power the energized time must not exceed one minute, while the de-energized time between two energizing phases must be long enough for the solenoid to cool down.

AVAILABLE OPTIONS

The desired model has to be defined choosing one option in every column, building in this way the solenoid code.

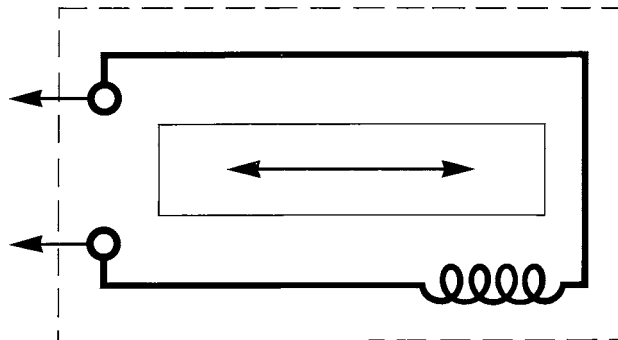
<p>Versions</p> <p>D46 pull action</p> <p>DS46 pull-push action</p>	<p>Voltages</p> <p>1 = 12 V DC</p> <p>2 = 24 V DC</p>	<p>Circuits</p> <p>Series D</p>	<p>Brackets</p> <p>A</p> <p>C</p>	<p>Optional Springs</p> <p>M1</p> <p>M2</p>	<p>Electrical connections</p> <p>Standard Cables</p>
---	---	---------------------------------	---	---	--

ELECTRIC CIRCUITS FOR DIESEL ENGINES

SERIES D	INTERMITTENT
-----------------	--------------

ELECTRIC CIRCUIT FOR INTERMITTENT DUTY

The solenoid connection is not conditioned by the polarity (+ and -).



ELECTRICAL CONNECTIONS	<p>BY CABLES</p> <p>RED CABLES</p> <p>L = 150 mm</p>
-------------------------------	--

ACCESSORIES WITH M6 THREAD

<p>P6 THREADED DOWEL L = 45 mm</p>	<p>CLE6 UNI CLEVIS</p>	<p>SM6 AXIAL ARTICULATED JOINT</p>
<p>PW6 THREADED DOWEL M6 - 1/4 UNF L = 38 mm</p>	<p>AM6 AXIAL ARTICULATED JOINT</p>	<p>IM6 90° ARTICULATED JOINT</p>

OPTIONAL SPRINGS

INTERNAL SPRING 5M1		INTERNAL SPRING 5M2	
WIRE DIAMETER SPRING 1		WIRE DIAMETER SPRING 1.25	
Kg 0.700	Kg 1.5	Kg 1.100	Kg 2.5

EXAMPLE OF APPLICATION

FOR STOP	ENGINE WITH INJECTION PUMP NORMALLY OPEN ENGINE SHUTDOWN BY SOLENOID ENERGIZING INTERMITTENT DUTY
-----------------	---

