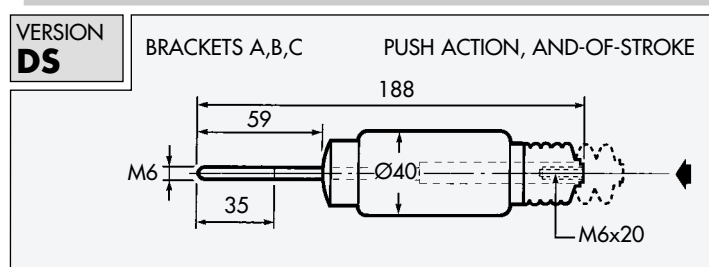
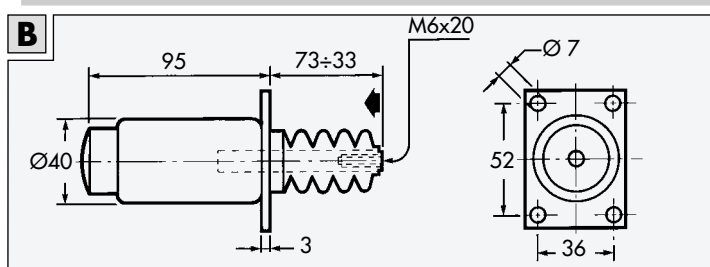
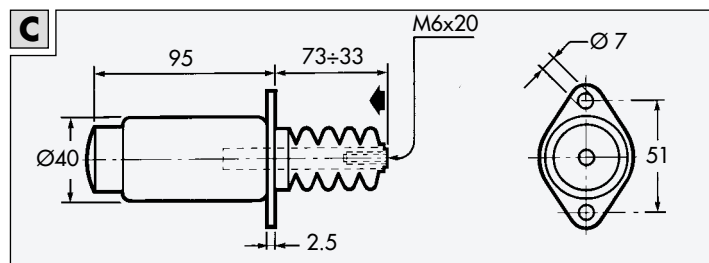
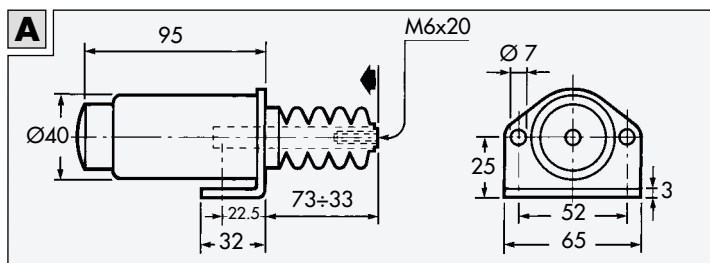
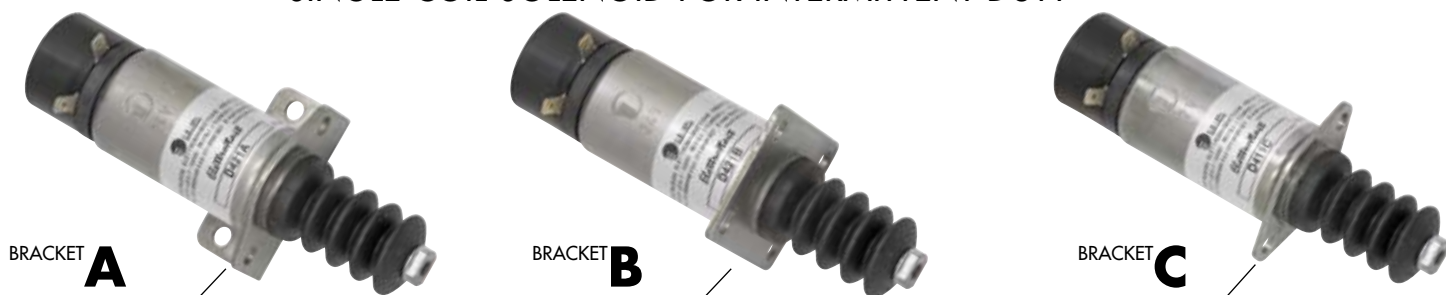
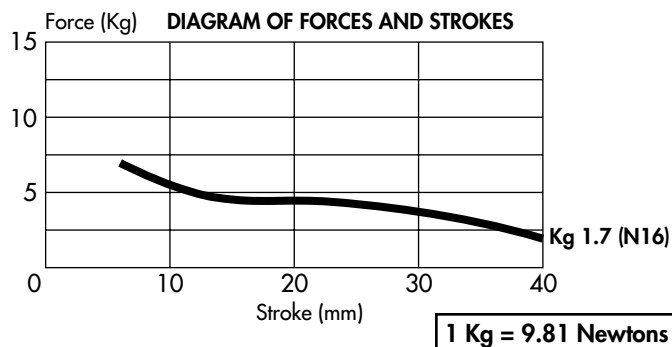


SINGLE COIL SOLENOID FOR INTERMITTENT DUTY



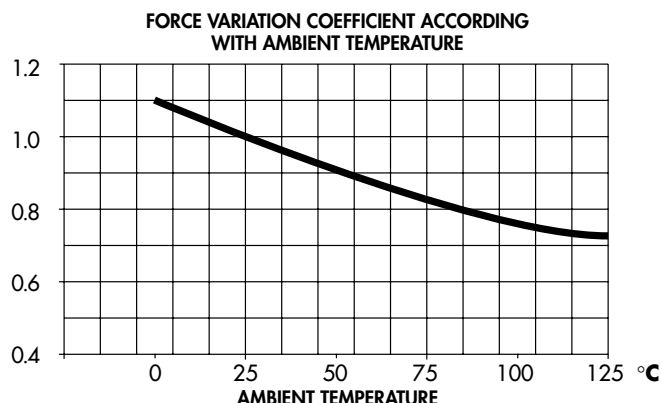
SPECIFICATIONS

Rated voltage	12 V DC	24 V DC
Pull current	25 A	11 A
Duty service	Intermittent	
Stroke	40 mm	
Force at starting	1.7 Kg	
Windings insulation class	H (180° C)	
Ambient temperature	-40° C ÷ 120° C	
Weight	0.74 Kg	



OPERATION

The single coil Elettrostart solenoids are for intermittent duty providing high FORCE-STROKE pick-up. These solenoids are used to stop diesel engines when energized by actuating the fuel supply lever. The solenoid is de-energized when the engine is running, only in the stop phase it is energized cutting off the fuel flow. Due to its high operating power the energized time must not exceed one minute, while the de-energized time between two energizing phases must be long enough for the solenoid to cool down.



AVAILABLE OPTIONS

The desired model has to be defined choosing one option in every column, building in this way the solenoid code.

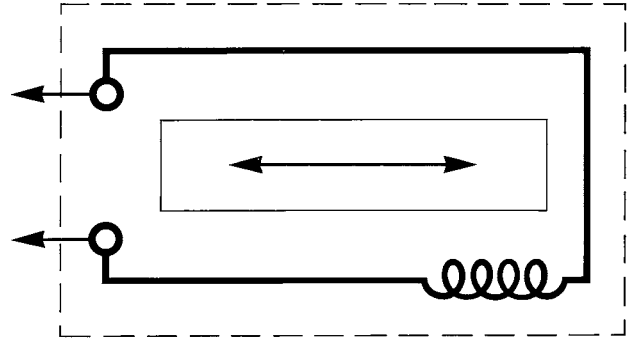
Versions	Voltages	Circuits	Brackets	Optional Springs	Electrical connections
D4 pull action	1 = 12 V DC	1 = Series D	A	M1	Standard Faston
DS4 pull-push action	2 = 24 V DC		B	M2	F = Cables
			C		

SINGLE COIL SOLENOID FOR INTERMITTENT DUTY

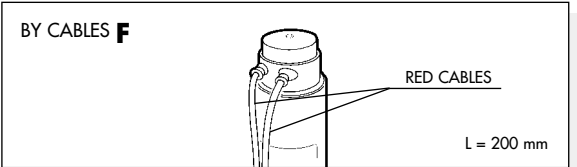
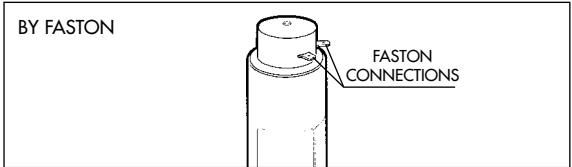
ELECTRIC CIRCUITS FOR DIESEL ENGINES

SERIES D	INTERMITTENT
-----------------	---------------------

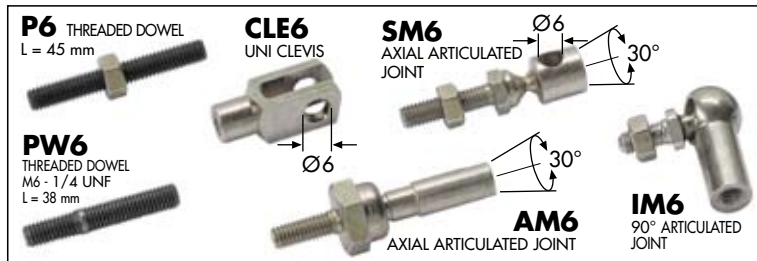
ELECTRIC CIRCUIT FOR INTERMITTENT DUTY
 The solenoid connection is not conditioned by the polarity (+ and -).



ELECTRICAL CONNECTIONS



ACCESSORIES WITH M6 THREAD



OPTIONAL SPRINGS

INTERNAL SPRING 4M1		INTERNAL SPRING 4M2	
WIRE DIAMETER SPRING 1		WIRE DIAMETER SPRING 1.2	
Kg 0.4 at 25mm	Kg 1.5	Kg 0.9 at 25mm	Kg 3.0

EXAMPLE OF APPLICATION

FOR STOP ENGINE WITH INJECTION PUMP NORMALLY OPEN
 ENGINE SHUTDOWN BY SOLENOID ENERGIZING INTERMITTENT DUTY

